

# Prices Summer 2023

	Return ticket	Single trip
Adult (from 18 years)	36,90 €	25,90 €
Child with parent	8,90 €	6,90 €
Youth/Children (6 to 17 years old)	23,90 €	16,90 €
Dog (any size)	5,90 €	5,90 €
<b>FAMILY DISCOUNT</b> for parents with their children (6 - 17 years old))		
2 adults + 1 child	82,70 €	58,70 €
2 adults + 2 children	91,60 €	65,60 €
1 adult + 1 child	45,80 €	32,80 €
1 adult + 2 children	54,70 €	39,70 €
Each additional child	8,90 €	6,90 €

Children up to 6 years travel for free.

Deposit for Keycard is 3,00 €, refunded when returned.

Single trip from 3:30 p.m.: 14,40 €

As of April 2023. Errors and changes excepted.

# Operating Times Summer 2023

01.05. – 26.05. 9:00 Uhr – 17:00 Uhr\*

27.05. – 14.07. 8:30 Uhr – 17:30 Uhr\*

15.07. – 10.09. 8:30 Uhr – 18:00 Uhr\*

11.09. – 15.10. 8:30 Uhr – 17:30 Uhr

16.10. – 05.11. 9:00 Uhr – 16:30 Uhr

From 06.11. closed due to revision work.

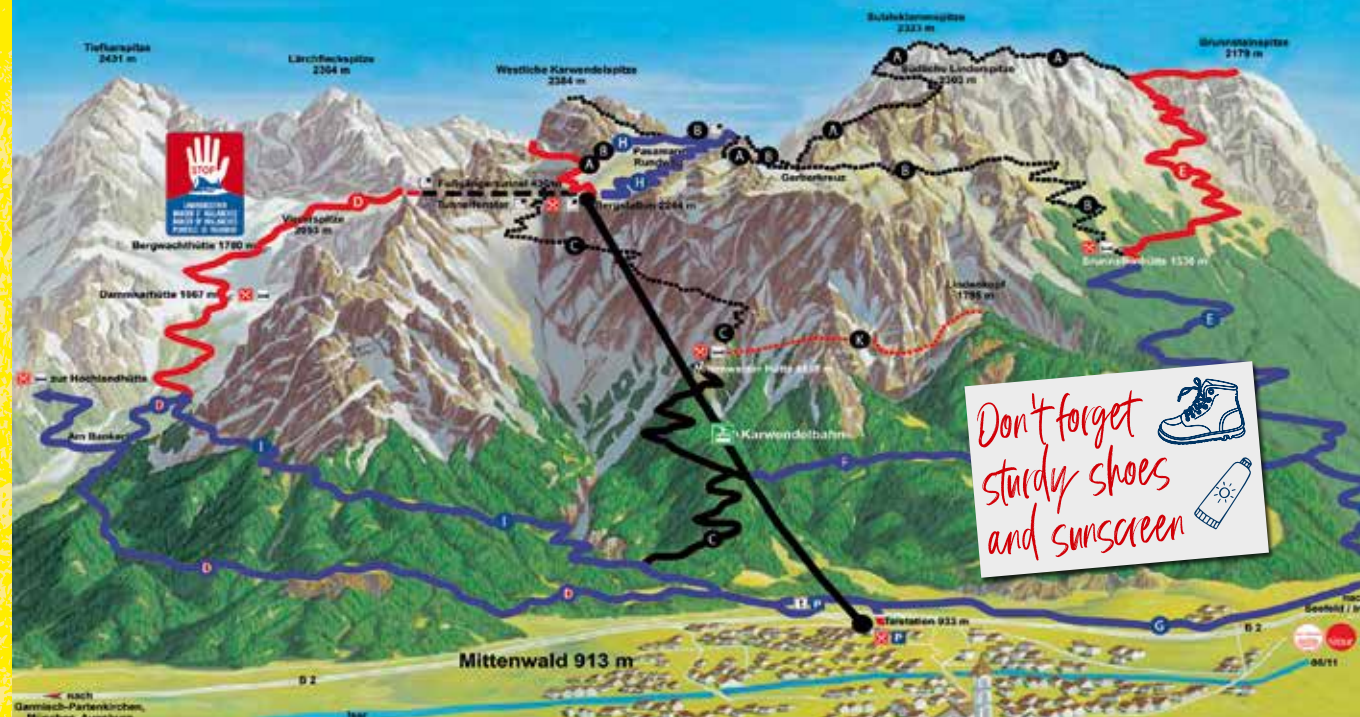
\*\*In good wheater condition operating times on Thursday and Saturday till 9 p.m. Please check the Informations on the Homepage to be sure.

Last ascent 30 minutes before the end of operating times.

Due to poor weather conditions or for maintenance reasons the cable car may also be closed during the mentioned operational times.

[www.karwendelbahn.de](http://www.karwendelbahn.de)

## KARWENDEL ALPINE ROUTES



## Tour options around the mountain station

### MITTENWALDER KLETTERSTEIG (A)

7 – 9 hours | ■ difficult

### HEINRICH-NÖE-STEIG (B)

5 – 7 hours | ■ difficult

### KARWENDELSTEIG (C)

3 – 4 hours | ■ difficult

### DAMMKARSTEIG TO THE VALLEY (D)

4 – 5 hours | ■ moderately-easy

without via ferrata set

### PASSAMANI PANORAMAWEG (H)

approx. 1 hour | ■ easy

Route information and hiking maps are available at the Karwendel ticket office in the valley.

## MOUNTAIN PATHS: LEVELS OF DIFFICULTY

EASY

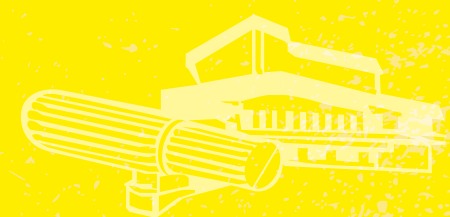
Easy mountain paths are often narrow, maybe steep and have no sections where there is danger of falling down ravines etc.

MODERATELY  
DIFFICULT

Moderately difficult mountain paths are predominantly narrow, often steep and have sections where there is danger of falling down ravines etc. There may be short sections with ropes or cables to hold on to.  
(With via ferrata set)

DIFFICULT  
(with via ferrata set)

Difficult mountain paths are narrow, often steep and dangerous i.e. passages with ravines etc. There are regular secured hiking sections with ropes / cables and / or simple climbing sections, where you need to use your hands. Sure-footedness and a head for heights are an absolute must!



Germany's second highest mountain railway at 2244 meters



Karwendelbahn AG

Alpenkorpsstr. 1

82481 Mittenwald, Germany

Tel.: +49 (0)8823 937676-0

service@karwendelbahn.de



[www.karwendelbahn.de](http://www.karwendelbahn.de)



# Summer in the Karwendel mountains

## Family celebrations, events & meetings

At 2244m, our possibilities to implement your personal celebration according to your wishes are almost limitless. Feel free to contact us!



*My mountain, my Beer!*

Have we piqued your interest?  
Become a shareholder and part of  
something big, namely Germany's  
highest brewery!

[www.deutschlands-bieraktie.de](http://www.deutschlands-bieraktie.de)



## Nature Information Center

Germany's highest nature information center in the oversized telescope in the larch wood coat. 7,7 m above the abyss right next to the mountain station. This building bears the sustainability prize of the Alpine Convention and is a sign of sustainable commitment to sensitive nature.

## Germany's highest brewery and distillery

At 2244m we brew our own beer!  
Our Karwendelbräu! You can enjoy our beer freshly tapped in our mountain restaurant or on our sun terrace, or you tap it yourself at home with our very own kegs!  
Our master brewer will be happy to guide you through our brewery and distillery for a tasting! Just contact us:  
[berggaststaette@karwendelbahn.de](mailto:berggaststaette@karwendelbahn.de) or  
+49 (0) 8823 937676-67.



- 18.05. Fathers Day at the Karwendel
- 28.05. Pentecost Sunday brunch
- 07.06. We celebrate:  
our 56th birthday
- 22.07. General meeting of  
our shareholders

**Tuesday 10:45 a.m.: Panorama tour**  
**Each 1. and 3. tuesday of the month**  
**our special senior tuesday**  
Return ticket incl. coffee and cake and a  
panorma tour: 36,90 €